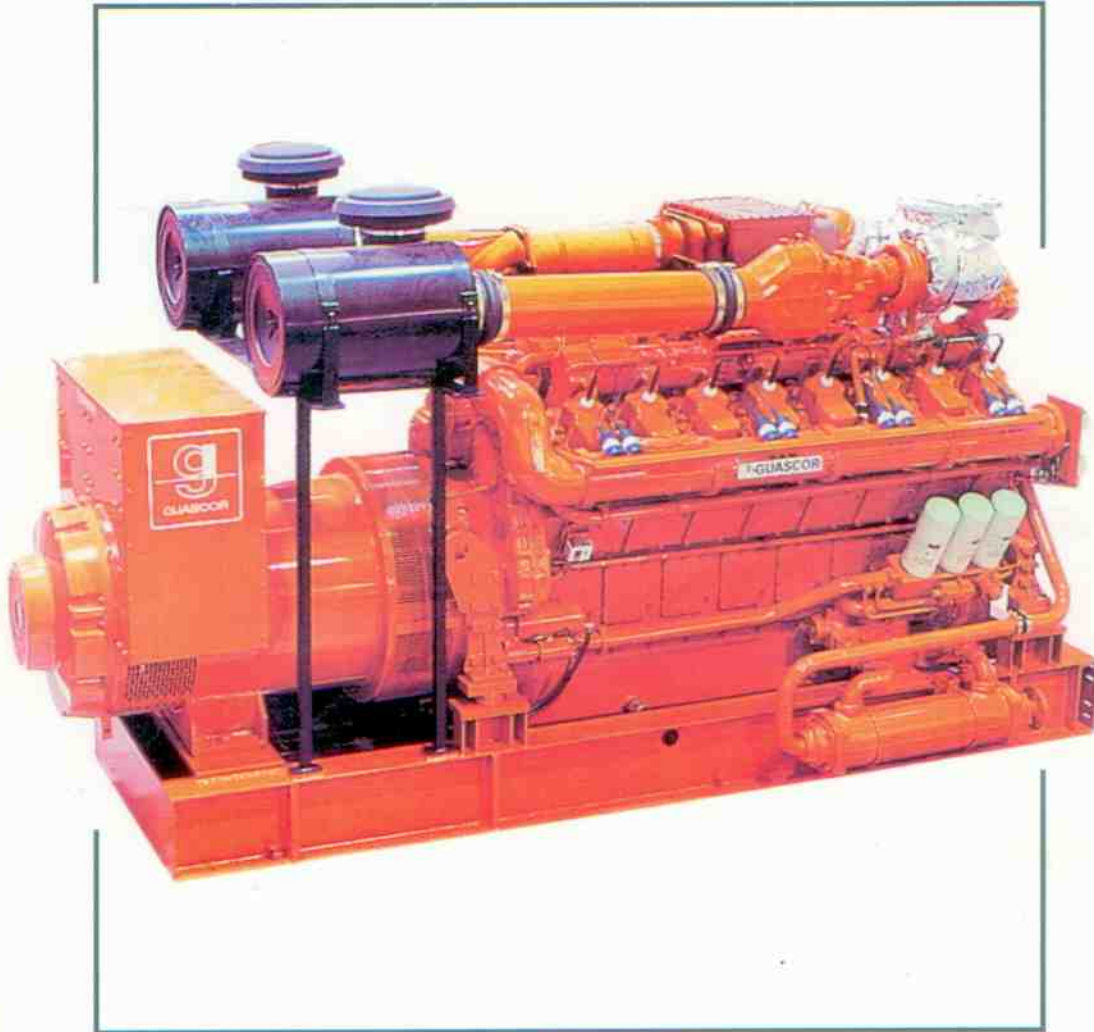




**GUASCOR<sup>®</sup>**

**Highly Reliable  
Fuel Efficient  
Low Maintenance  
Environment - friendly**



- NATURAL GAS ● BIO GAS ● PRODUCER GAS
- LANDFILL GAS ● SEWAGE GAS

**GGE Power Pvt. Ltd.**

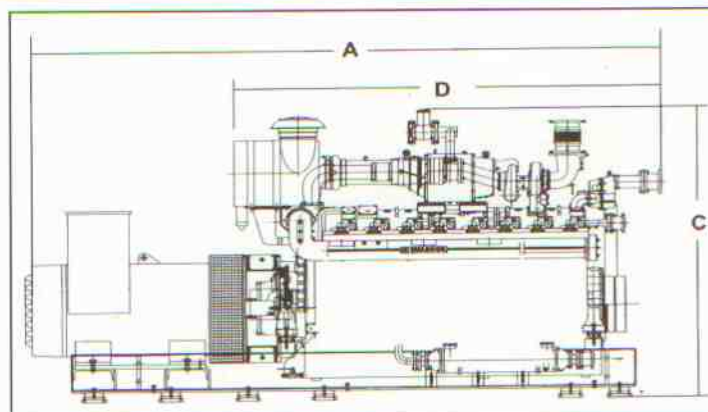
E-mail : [sales@ggepower.com](mailto:sales@ggepower.com) , [info@ggepower.com](mailto:info@ggepower.com)  
Website : [www.ggepower.com](http://www.ggepower.com)

**● NATURAL GAS ● BIO GAS ● PRODUCER GAS  
LANDFILL GAS ● SEWAGE GAS**

**Product Specifications for Gas Gensets :**

Electrical KW	KVA at 0.8 p.f.	Rated Amperes at 415 V, 0.8 p.f.	Mechanical Brake KW	Engine Model	No. of Cylinders	Bore mm	Stroke mm	Cylinder Volume Ltrs.	Compression Ratio	Length mm (A)	Width mm (B)	Height mm (C)	Weight Kg.
142	178	248	150	FG180	6	152	165	18	11.0 : 1	2766	1247	1998	3720
190	237	332	200	FG240	8	152	165	24	11.0 : 1	3408	1226	2210	3860
260	325	455	275	FGLD180	6	152	165	18	11.0 : 1	2774	1247	2210	3860
300	375	521	314	SFGLD180	6	152	165	18	11.8 : 1	3024	1226	2210	3885
340	425	590	360	FGLD240	8	152	165	24	11.0 : 1	3408	1235	2268	4770
400	500	696	419	SFGLD240	8	152	165	24	11.8 : 1	3658	1235	2268	4795
530	662	920	550	FGLD360	12	152	165	36	11.0 : 1	3580	1664	2150	6530
600	750	1040	630	SFGLD360	12	152	165	36	11.8 : 1	3830	1664	2150	6530
700	875	1220	725	FGLD480	16	152	165	48	11.0 : 1	4146	1664	2150	8400
800	1000	1400	838	SFGLD480	16	152	165	48	11.8 : 1	4396	1664	2184	8450
945	1180	1650	985	SFGLD560	16	160	175	56	11.7 : 1	4670	1670	2817	9780
1000	1250	1740	1055	SFGM560	16	160	175	56	12 : 1	5200	1670	2817	10200
1200	1500	2100	1240	HGM560	16	160	175	56	12 : 1	5800	1670	2817	11200

**DIMENSIONS**



**NOTE :**

- Compliance Standards ISO 3046, ISO 8528
- Electrical Output estimated on alternator terminals
- Kindly ask for deration data for your site conditions.
- Alternator Options Leroy Somer / Stamford.
- 11 kV option also available.

# GGE Power Pvt. Ltd.

Email : [info@ggepower.com](mailto:info@ggepower.com) Website : [www.ggepower.com](http://www.ggepower.com)

**Delhi :**  
26/24, East Patel Nagar,  
New Delhi-110008  
Ph. : 011-25817751, 25736114  
Fax : 011-25764622  
Cell : 9136125523

**Mumbai :**  
EL-113, Electronics Zone,  
TTC Industrial Area,  
MIDC, Mahape,  
Navi Mumbai-400701  
Tel. : 27618879  
Telefax : 27614969

**Surat :**  
66, Jinawala Compound,  
Gabbar Mata Mandir Street,  
Near Ajanta Cinema,  
Kadodara - 394237  
Surat (Gujarat)  
Tel. : (02622) 272057

As continuous changes are made these specifications may be taken as guidelines and are not binding.